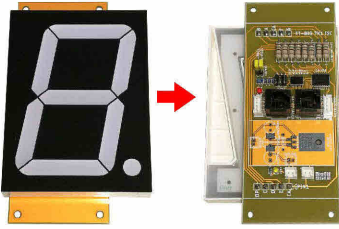


ET-BIG 7X1 I2C (P-ET-A-00597)



ET-BIG 7X1 I2C is an 1-Digit 7-SEGMENT LED DISPLAY in a big red 4-inch high Board; it receives and controls the display through PORT I2C and it can be connected to Board Microcontrollers easily such as ET-MEGA32U4-RS485 ET-ESP8266-RS485, ARDUINO BOARD, BBC MICRO:BIT. When it is connected in a format of I2C, it can connect a maximum of 8 Boards ET-BIG 7X1 I2C simultaneously.

SPECIFICATIONS OF ET-BIG 7X1 I2C

- Be 1-Digit LED 7 SEGMENT Display in a big red 4-inch high board
- I2C No.PCF8575 receives incoming data that will be displayed together with ULN2803
- JUMPER setup and chooses 8 Address Positions of Board; so, it can connect 8 Boards ET-BIG 7X1 I2C (8-Digit) simultaneously
- Have 2 sets of Connector I2C BUS as 4 PIN WAFER 2.50 mm. and 2 sets of Connector I2C BUS as RJ11 6 PIN FEMALE to be connected to board and be connected out from board.
- Use 2 sets of POWER +12VDC as 2 PIN WAFER 2.50mm. for 7SEGMENT and +5VDC from Connector I2C BUS for PCF8575
- Size of 1-Digit DISPLAY: 9 x 12.1 cm.
- PCB Size: 6.2 x 15.4 cm.

A set of ET-BIG 7X1 I2C includes...

1. Board ET-BIG 7X1 I2C
2. Document

An example shows how to connect boards together by Cable I2C BUS.



OPTION ET-BIG 7X1 I2C _ET-BIG 7X2 I2C SLAVE & MASTER

RJ-I2C-M (P-CB-A-00039)



- One terminal side is CONNECTOR RJ11 and another one side is 6 of CONNECTOR PIN HEADER MALE, with 20 cm. long.

RJ-I2C-F (P-CB-A-00040)



- One terminal side is CONNECTOR RJ11 and another one side is 6 of CONNECTOR PIN HEADER FEMALE, with 20 cm. long.

4P-I2C-4P (P-CB-A-00042)



- Both sides are CONNECTOR HOUSING 4 PIN FEMALE 2.50 mm., with 20 cm. long.

RJ-I2C-RJ (P-CB-A-00041)



- Both sides are CONNECTOR RJ11; Pin 1 of one side is matching with Pin 1 of another one side, with 20 cm. long.

2P-2P-30CM (P-CB-A-00051)



- Both sides are CONNECTOR HOUSING 2 PIN FEMALE 2.50 mm., with 30 cm. long.

WAFER CON 2.50 mm. STRAIGHT MALE

- WAFER CON 6 PIN 2.50MM STRAIGHT (A-CO-A-00020)
- WAFER CON 5 PIN 2.50MM STRAIGHT (A-CO-A-00169)
- WAFER CON 4 PIN 2.50MM STRAIGHT (A-CO-A-00088)
- WAFER CON 3 PIN 2.50MM STRAIGHT (A-CO-A-00168)
- WAFER CON 2 PIN 2.50MM STRAIGHT (A-CO-A-00161)

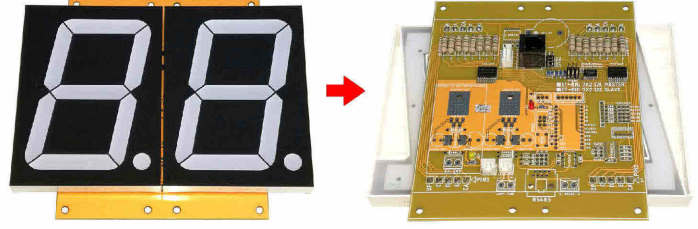


HOUSING CON 2.50 mm. FEMALE

- HOUSING CON 2.50MM 2 PIN (A-CO-A-00162)
- HOUSING CON 2.50MM 3 PIN (A-CO-A-00169)
- HOUSING CON 2.50MM 4 PIN (A-CO-A-00089)
- HOUSING CON 2.50MM 5 PIN (A-CO-A-00268)
- HOUSING CON 2.50MM 6 PIN (A-CO-A-00022)
- ไส้ CON CRIMP 2.50MM (A-CO-T-00002)



ET-BIG 7X2 I2C SLAVE (P-ET-A-00598)



ET-BIG 7X2 I2C SLAVE is a 2-Digit 7-SEGMENT LED DISPLAY in a big red 4-inch high Board; their specifications are the same as ET-BIG 7X1 I2C.

SPECIFICATIONS OF ET-BIG 7X2 I2C SLAVE

- Be 2-Digit LED 7 SEGMENT Display in a big red 4-inch high board
- Have a set of Connector I2C BUS as 4 PIN WAFER 2.50 mm. and a set of Connector I2C BUS as RJ11 6 PIN FEMALE
- JUMPER setup and chooses 8 Address Positions of Board; so, it can connect 8 Boards ET-BIG 7X2 I2C SLAVE (16-Digit) simultaneously.
- Size of 2-Digit DISPLAY: 18.1 x 12.1 cm.
- PCB Size: 13 x 15.4 cm.

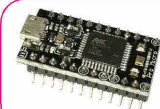
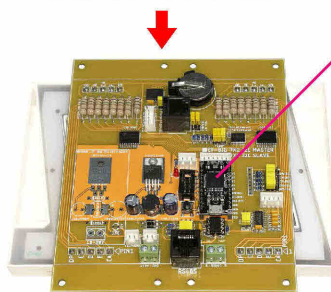
A set of ET-BIG 7X2 I2C SLAVE includes...

1. Board ET-BIG 7X2 I2C SLAVE
2. Document

ET-BIG 7X2 I2C MASTER (P-ET-A-00599)



ET-BIG 7X2 I2C MASTER is a 2-Digit 7-SEGMENT LED DISPLAY in a big red 4-inch high Board. It uses Board ET-BIG 7X2 I2C SLAVE that is added more devices; for example, using MCU ATMEGA32U4 to write program and control operation from its own board. This board can be applied to be a price tag, COUNTER to count amount of car's entrance and exit.



- Using PRO-MICRO 32U4 to be MCU on Board to command

CABLE USB/MICRO 1M (A-CB-A-00045)

- Cable USB is 1 meter long; one terminal side is Connector TYPE A that is connected to computer and another one side is MICRO USB TYPE B MALE that is connected to Board PRO MICRO 32U4.

(OPTION)

SPECIFICATIONS OF ET-BIG 7X2 I2C MASTER

- MCU on board is PRO MICRO 32U4 to command
 - ATMEGA32U4, FLASH 32 KBYTE, RAM 2.5 KBYTE, EEPROM 1 KBYTE
 - USB PORT as MICRO BUS on board ; it can use Program Arduino for writing and developing program
 - Have RTC (REAL TIME CLOCK) No.DS3232, provided with 3V BATTERY BACKUP
 - Have CONNECTOR IDE 6 PIN under standard of AVR ISP
 - Have Circuit LINE DRIVER as RS485 HALF DUPLEX IC 75176
 - Connector 2 PIN TERMINAL 5.0 mm. RS485
 - Connector RS485 FEMALE 8 PIN RS485
 - Have Circuit LINE DRIVER RS232 IC ICL3232, CONNECTOR 4 PIN WAFER 2.50 mm.
 - Have CONNECTOR 3 PIN WAFER 2.50 mm for GPIO (D10, +5V, GND)
 - Have CONNECTOR 6 PIN WAFER 2.50 mm for GPIO (A0, A1, A2, A3, +5V, GND)
 - Have 5-JUMPER to choose and setup ID ADDRESS for setting ID of Board in case of connecting board in a format of RS485 Interface (GPIO D5-D9)
 - Use 2 sets of POWER +12VDC as 2 PIN WAFER 2.50 mm. and 2 PIN TERMINAL 5.0 mm with Circuit SWITCHING 5V/1A from +12VDC to provide for the Circuit
 - A set of ET-BIG 7X2 I2C MASTER includes ...
1. Board ET-BIG 7X2 I2C MASTER
 2. Document
- (*Please visit website: www.etteam.com to DOWNLOAD Manual and Example Program).